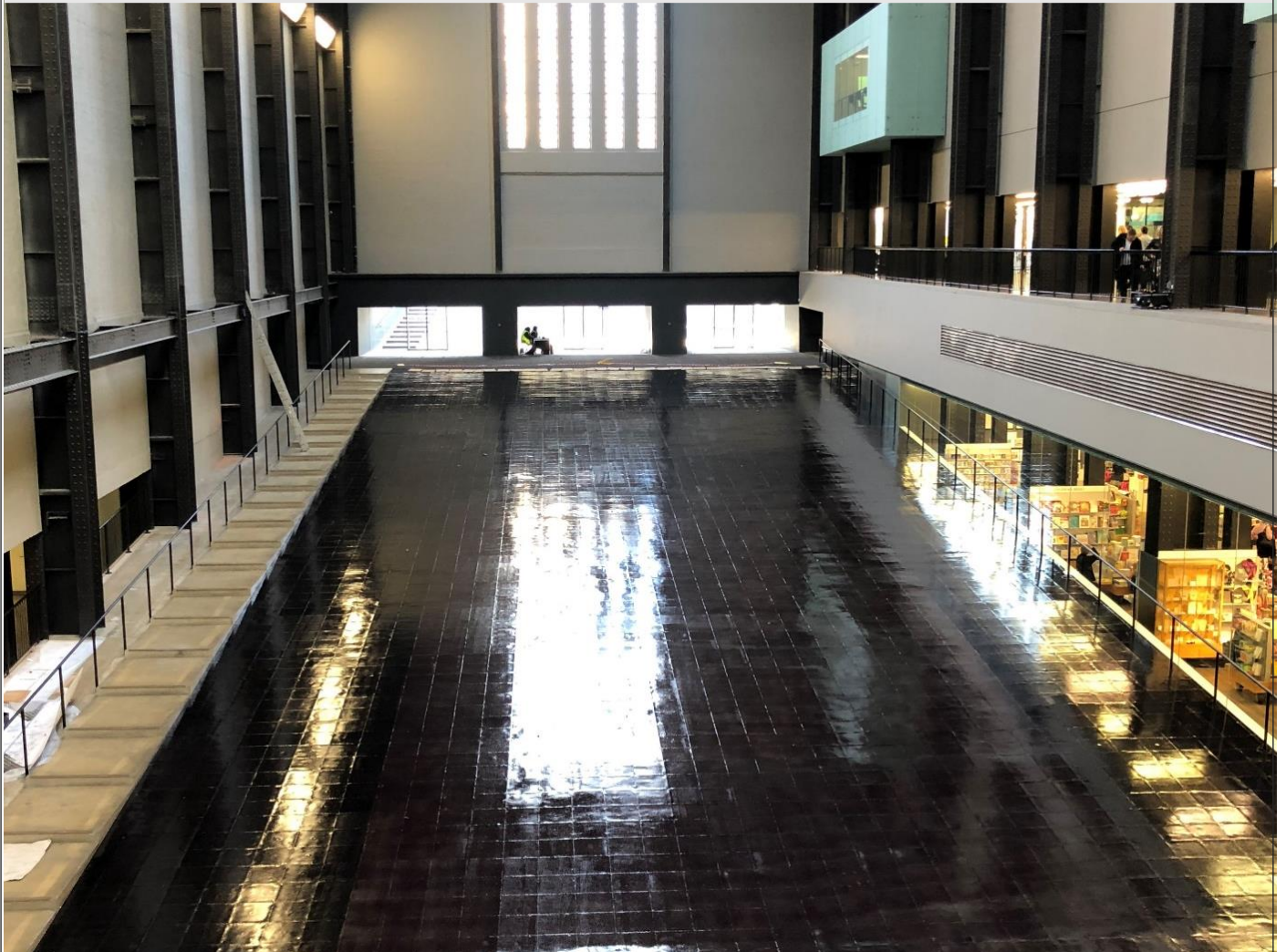


# Case Study

**Tate Modern Art Gallery, London**

Floor Protector Plus



## **Floor Protector Plus at Tate Modern Art Gallery**

The Tate Modern in London wanted to put on an exhibition like no other and turned to FixMaster to come up with the essential protection for their unique Thermo Chromatic Pigments that change colour with temperature and react to body heat. Special Effects & Coatings developed the colour changing pigments which were impregnated into the tiles, then here at FixMaster we got to work on the best solution to enable them to be walked on by huge numbers of visitors expected by The Tate, but still be effective.

We came up with the perfect solution which was to use our [Floor Protector Plus Polyaspartic Resin](#) as the initial protective layer, followed by Epoxy Floor Seal to give a hard wearing, matt finish which was specified by the artist Tania Bruguera.

The area to be covered was 3,200m<sup>2</sup> in the famous Turbine Hall, it was applied in a week by Steve and his team at Anglia Décor, a company that has used FixMaster products extensively with a fantastic record of quality installations.



Floor Protector Plus is an exceptionally hardwearing coating that incorporates the latest polyaspartic technology. Ideal as a protective clear coating applied directly to concrete, or for the long-term protection of epoxy and decorative floor finishes.

- Protects existing coatings from wear and tear
- Prevents UV Discolouration
- Excellent chemical resistance
- Flexible to cope with movement around vibrating machinery
- Can be applied directly to metal



Overall this was a unique challenge, but one that was rewarding and has seen a very individual art exhibition come to life. We are glad we were able to come up with this solution.

Floor Protector Plus is supplied in 2.5L tins



CALL 01483 266636 EMAIL [sales@fixmaster.co.uk](mailto:sales@fixmaster.co.uk) VISIT [fixmaster.co.uk](http://fixmaster.co.uk)